



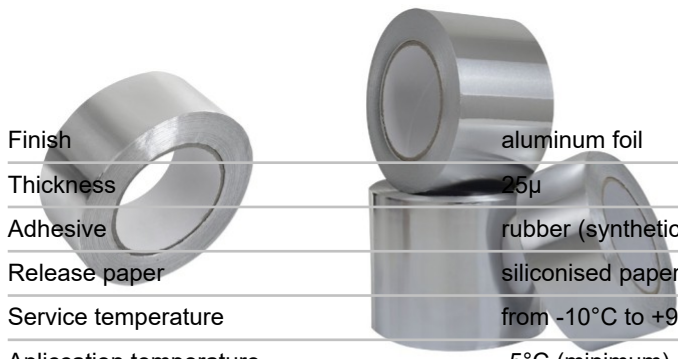
TAPE ALUFOIL 35000

Material: aluminium foil

Use: joining insulation materials and insulation coated aluminium. Tape Alufoil 35000 provides unrivalled performance, maintaining insulation efficiency by protecting against the effects of fire, moisture and dust. The products are easy to apply, exhibiting instant adhesion and can be shaped to any profile. Product with MED certificate.

Availability: in stock

PRODUCT CHARACTERISTICS



Finish	aluminum foil
Thickness	25μ
Adhesive	rubber (synthetic rubber/resin)
Release paper	siliconised paper
Service temperature	from -10°C to +90°C
Application temperature	-5°C (minimum)
Ultimate tensile strength (around)	89 N/25mm
Elongation (around)	8-11%
Peel adhesion to steel (around)	initial: 20-25 N/25mm after 24h: 25-30 N/25mm
Fire resistance	class 0 compliance fire resistance Independently tested to BS 476 part 6 and Part 7 – Class 1
Shelf life/storage	at least 12 months from date of manufacture when stored in a dry place within the temperature range +10°C and +30°C



35000 50mm x 45mb
35000 75mm x 45mb
35000 100mm x 45mb

T-01-001
T-01-002
T-01-003

ADDITIONAL INFORMATION Surfaces to be bonded must be clean, dry and free from dust, grease and loose materials. If necessary, wipe surfaces sparingly with a cloth dampened with a ketone-free cleaner and allow to dry for at least an hour before tape application.

The butt joints of insulation sections should be positioned together without gaps to ensure an adequate bond. Select a tape width suitable for the application. A width of 50mm is suitable for closely positioned, flat sections. Otherwise, select a tape the thickness of the insulation plus 50 mm to allow for the exposed cut edge.



REINFORCED ALUMINIUM TAPE



Material: glass fibre, density 200 g/m²

Use: joining insulation materials either aluminium coated or not. Embedded glass fiber mesh increases the mechanical strength. The applied adhesive allows application in winter conditions.

Availability: in stock

PRODUCT CHARACTERISTICS

Finish	aluminium foil
Thickness	0,09mm; PSTC-133/ASTM D 3652
Adhesive	modified acrylic
Release paper	siliconised paper
Service temperature	from -35°C to +120°C
Application temperature	from -20°C to +40°C
Ultimate tensile strength (around)	120 N/25mm; PSTC-131/ASTM D 3759
Elongation (around)	3%
Peel adhesion to steel (around)	12 N/25mm; PSTC-131/ASTM D 3759
Shelf life/storage	6 month from date of manufacture when stored within the temperature range +20°C and +30°C and 50% RH

NAME

Reinforced Alu Tape 50mm x 45mb
 Reinforced Alu Tape 75mm x 45mb
 Reinforced Alu Tape 100mm x 45mb

INDEX

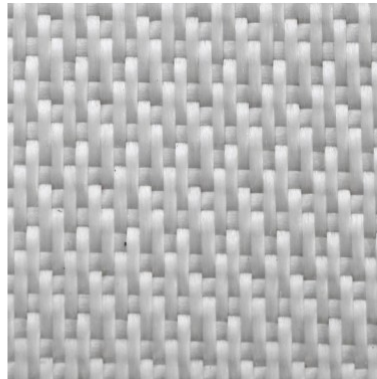
T-01-004
 T-01-005
 T-01-006

ADDITIONAL INFORMATION

Surfaces to be bonded must be clean, dry and free from dust, grease and loose materials. If necessary, wipe surfaces sparingly with a cloth dampened with a ketone-free cleaner and allow to dry for at least an hour before tape application.

The butt joints of insulation sections should be positioned together without gaps to ensure an adequate bond. Select a tape width suitable for the application. A width of 50mm is suitable for closely positioned, flat sections. Otherwise, select a tape the thickness of the insulation plus 50 mm to allow for the exposed cut edge.

GLASS FIBRE TAPE ST 1



Material: glass fibre, density 420g/m²

Use: joining insulation materials either glass fibre coated or not. It is characterised of resistance on occurrence the high temperatures up to 450°C.

Availability: in stock

PRODUCT CHARACTERISTICS

Finish	glass fibre
Thickness	0,37mm +/- 0,02
Resistance to temperature	from +450°C
Application temperature	from +5°C to +30°C
Ultimate tensile strength	5500 N/5cm; EN ISO 13934.1
Fire resistance	non flammable
Shelf life/storage	in temperature range from +10°C to +35°C and relative humidity 40% do 70%

NAME

Glass fibre tape 420g/m² 30mm x 100mb
 Glass fibre tape 420g/m² 50mm x 100mb
 Glass fibre tape 420g/m² 75mm x 50mb
 Glass fibre tape 420g/m² 75mm x 100mb

INDEX

T-01-007
 T-01-008
 T-01-009
 T-01-010

ADDITIONAL INFORMATION

Available also in self-adhesive version.

Surfaces to be bonded must be clean, dry and free from dust, grease and loose materials. If necessary, wipe surfaces sparingly with a cloth dampened with a ketone-free cleaner and allow to dry for at least an hour before tape application.



GLASS FIBRE TAPE ST 1 GLASS FIBRE TAPE ST 55



Material: glass fibre, density 200g/m²

Use: fixing and packaging, assembly and repair, electrical insulation, insulation and protection. It has moisture resistance, easily laid to the ground. It has a MED certificate.

Availability: in stock

PRODUCT CHARACTERISTICS



Finish	glass fibre
Thickness	0,20mm +/- 0,02
Resistance to temperature	from +450°C
Application temperature	from +5°C to +30°C
Ultimate tensile strength	3000 N/5cm; EN ISO 13934.1
Fire resistance	non flammable
Shelf life/storage	in temperature range from +10°C to +35°C and relative humidity 40% do 70%

NAME

Glass fibre tape 200g/m² 30mm x 100mb
 Glass fibre tape 200g/m² 50mm x 100mb
 Glass fibre tape 200g/m² 75mm x 50mb
 Glass fibre tape 200g/m² 75mm x 100mb

INDEX

T-01-011
 T-01-012
 T-01-013
 T-01-014

ADDITIONAL Surfaces to be bonded must be clean, dry and free from dust, grease and loose materials. **INFORMATION** If necessary, wipe surfaces sparingly with a cloth dampened with a ketone-free cleaner and allow to dry for at least an hour before tape application.

Material:

U ADDITIONAL INFORMATION

Se



:
electrical insulation and protection. The tape with the resistance to moisture and easy apply to the surface.

Availability



PRODU
CT

Finish

Colour

Thickness

Adhesive

Release paper

Service temperature

Application temperature

Ultimate tensile strength

Peel adhesion to steel

Shelf life/storage

NAME

Duct tape 50mm x 50mb

RUBBER TAPE



Material: rubber foam

Use: adhesive tape used for assembly join in insulation made of synthetic rubber. The rubber tape is an insulation, sealing, suppressed and damping material. Prevents water vapor condensation and reduces energy losses.

Availability: in stock

PRODUCT CHARACTERISTICS

Finish	rubber foam
Thickness	3mm
Adhesive	modified acrylic
Release paper	siliconised paper
Service temperature	from -20°C to +85°C
Peel adhesion	22 N/25mm; AFERA 4001
Coefficient of resistance to water vapor diffusion	>=7000; EN13469, EN12086
Coefficient of thermal conductivity	<=0,035 W/(m K) in average temp. 0°C
Coefficient of thermal conductivity	<=0,039 W/(m K) in average temp. 40°C
Reaction to fire	no spread of fire
Shelf life/storage	12 months from date of manufacture when stored within the temperature range 0°C and +35°C and from 50% to 70% RH

NAME

Rubber tape 50mm x 15mb

INDEX

T-01-016

ADDITIONAL Surfaces to be bonded must be clean, dry and free from dust, grease and loose materials. **INFORMATION** If necessary, wipe surfaces sparingly with a cloth dampened with a ketone-free cleaner and allow to dry for at least an hour before tape application.

CERAMIC TAPE (ADHESIVE)



Material: glass fibre

Use: thermal insulation high temperature installation, steam installation, hoses, cables, pipe connections, insulation of components exposed to high temperature. Tape made of non-combustible textile materials resistant on oils, fats, solvents, organic and non-organic acid. Constant running ability of temp. 550°C.

Availability: in stock

PRODUCT CHARACTERISTICS

Finish	glass fibre
Thickness	3mm
Classification temperature	550°C
Softening temperature	840°C
Ultimate tensile strength	2400 N/mm ²
Modulus of elasticity	73 GPa
Elongation	3,3%
Coefficient of thermal expansion	$5 \times 10^{-6} \text{K}^{-1}$
Thermal conductivity	0,04-0,06 W/mK
Dielectric constant	6,1-6,7 ϵ
Fire resistance	non flammable
Shelf life/storage	12 months from date of manufacture when stored within the dry place with the temperature range +10°C and +30°

NAME

Ceramic tape 30mm x 50mb

INDEX

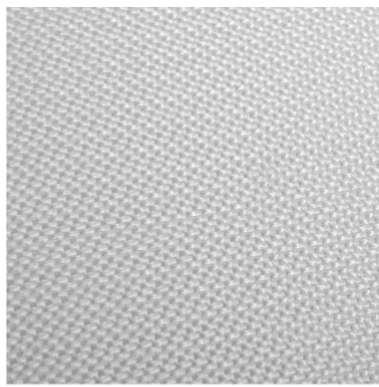
T-01-017

ADDITIONAL INFORMATION

GLASS FABRIC ST 1 / T

Material: glass fibre

Use: thermal and electrical insulation material,



non-combustible, chemically neutral, absorbing water in minimum quantities and practically not subject to corrosion of water. It is resistant to mould, rotting and breakdown strength. It is certified by DNV. It is characterised of resistance on occurrence the high temperatures up to 450°C .

Availability: in stock



PRODUCT CHARACTERISTICS

Finish	glass fibre
Thickness	0,37mm +/-0,02
Weight	420 g/m ² +/-20
Width	100cm +/-2
Resistance to temperature	to +450°C
Tensile strength warp	5500 N/5cm
Type of treatment	raw
Fire resistance	non flammable
Shelf life/storage	within the temperature range +10°C and +35°C and from 40% to 70% RH

NAME

Glass fibre fabric ST1/T

INDEX

T-02-420

ADDITIONAL INFORMATION

The standard width of the fabric is 1m. Current information on other roll widths is available on request.



GLASS FIBRE FABRIC ST1/T ALU

Material: glass fibre, aluminium coated

Use: thermal and electrical insulation material, non flammable, chemically neutral, hardly absorbing water and water corrosion resistant. It is resistant to

mould, rotting and breakdown strength. It is characterised by high temperature resistance up to 450°C.

Availability: in stock

PRODUCT CHARACTERISTICS

Finish	glass fibre
Thickness	0,37mm +/-0,02
Weight	420 g/m ² +/-8
Width	100cm +/-2
Resistance to temperature	to +450°C
Tensile strength warp	5500 N/5cm
Type of treatment	raw
Coating	aluminium
Fire resistance	non flammable
Shelf life/storage	within the temperature range +10°C and +35°C and from 40% to 70% RH

NAME

Glass fibre fabric ST1/T ALU

INDEX

T-02-420A

TAPE

FABRICS

INSULATION
FASTENERS

INSULATION
MATTRESSES

FASTENING
TECHNIQUES

SD STUDS

CABLE TRAYS

OTHERS

GLASS FABRIC ST 55 / T



Material: glass fibre

Use: thermal and electrical insulation material, non flammable, chemically neutral, hardly absorbing water and water corrosion resistant. It is resistant to mould, rotting and breakdown strength. It is certified by DNV. It is characterised by high temperature resistance up to 450°C.

Availability: in stock

PRODUCT CHARACTERISTICS

Finish	glass fibre
Thickness	0,20mm +/-0,02
Weight	200 g/m ² +/-8



Width	100cm +/-2
Resistance to temperature	to +450°C
Tensile strength warp	3000 N/5cm
Type of treatment	raw
Fire resistance	non flammable
Shelf life/storage	within the temperature range +10°C and +35°C and from 40% to 70% RH

NAME

Glass fibre fabric ST55/T

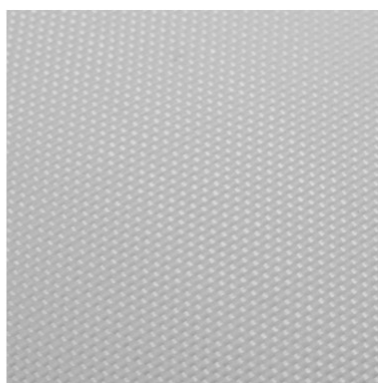
INDEX

T-02-200

ADDITIONAL The standard width of the fabric is 1m. Current information on other roll widths is available [INFORMATION](#) on request.

13

GLASS FABRIC ST 55 / T ALU



Material: glass fibre, aluminium coated

Use: thermal and electrical insulation material, non flammable, chemically neutral, hardly absorbing water and water corrosion resistant. It is resistant to mould, rotting and breakdown strength. It is characterised by high temperature resistance up to 450°C.

Availability: in stock

PRODUCT CHARACTERISTICS

Finish	glass fibre
Thickness	0,20mm +/-0,02
Weight	200 g/m ² +/-8
Width	100cm +/-2
Resistance to temperature	to +450°C

Tensile strength warp	3000 N/5cm
Type of treatment	raw
Coating	aluminium
Fire resistance	non flammable
Shelf life/storage	within the temperature range +10°C and +35°C and from 40% to 70% RH

NAME

Glass fibre fabric ST55/T ALU

INDEX

T-02-200A

TAPE

FABRICS

INSULATION
FASTENERS

INSULATION
MATTRESSES

FASTENING
TECHNIQUES

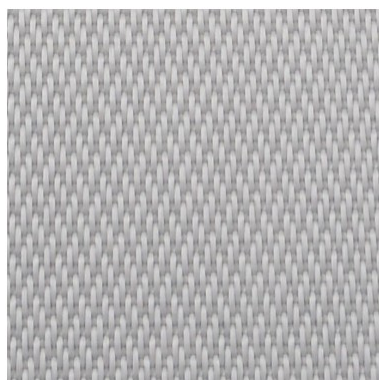
SD STUDS

CABLE TRAYS

INSULA-TION

OTHERS

GLASS FABRIC SILICONED (1 SIDE)



Material: glass fibre, one-sided silicone coating (1 side silicone coated glass fabric)

Use: resistant on oils, fats, solvents, organic and non-organic acid. The high immunity on mechanical, thermo and electrical failures, UV, water resistant. Characterised by good electric insulation properties.

Availability: in stock

PRODUCT CHARACTERISTICS

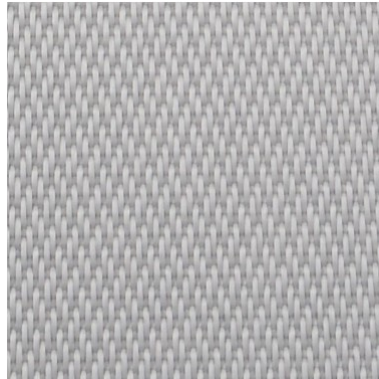
Finish	glass fibre
Thickness	0,5mm
Weight	430 g/m ²
Width	100cm
Service temperature	from -50°C to +250°C
Tensile strength warp	3800 N/50mm
Coating	silicone
Fire resistance	non flammable
Shelf life/storage	within the temperature range +10°C and +35°C and from 40% to 70% RH

NAME

Silicone fabric on one side with glass fibre

INDEX

T-02-430S1



1

Material:

FASTENERS

MATTRESSES

TECHNIQUES

Use:

Finish

Thickness

Weight

Width

Service temperature

Tensile strength warp

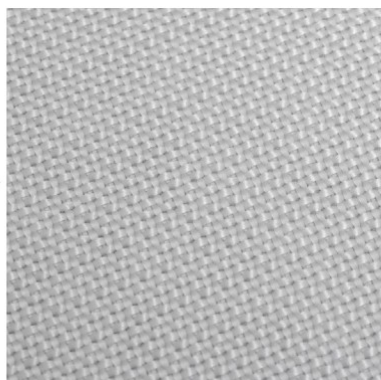
Coating

Fire resistance

Shelf life/storage

NAME

Silicone fabric on two sides with glass fibre



Material: glass fibre

Use: material with excellent insulating properties, characterised by resistant for wear and tear.

Availability: in stock

PRODUCT CHARACTERISTICS

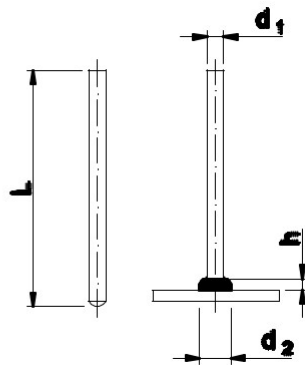
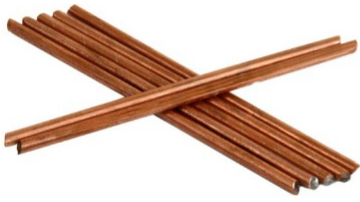
Finish	glass fibre
Thickness	0,18mm
Weight	220 g/m ² +/- 5%
Width	100cm
Service temperature	300-400°C
Tensile strength warp	470 N/cm
Coating	pasted 20g/m ²
Fire resistance	non flammable
Shelf life/storage	within the temperature range +10°C and +35°C and from 40% to 70% RH

NAME

Glass fibre fabric pasted

INDEX

T-02-220P



Material: copper covered steel, stainless steel 1.4301

Use: assembling the insulation in the marine and land industry. Insulation pins are made of heat-sealable wire in diameters range Ø2mm to Ø5mm.

Availability: on request

Logistic minimum:

25mm – 50mm – 2000 pcs./package

60mm – 150mm – 1000 pcs./package

from 160mm – 500 pcs./package

MATERIAL: COPPER COVERED STEEL

d ₁	L	d ₂ ≈	h≈	Weight (kg/100)	Index
2	25	6,0	3,5	0,062	T-03-012025
2	30	6,0	3,5	0,075	T-03-012030
2	40	6,0	3,5	0,100	T-03-012040
2	50	6,0	3,5	0,125	T-03-012050
2	60	6,0	3,5	0,150	T-03-012060
2	65	6,0	3,5	0,162	T-03-012065
2	70	6,0	3,5	0,175	T-03-012070
2	80	6,0	3,5	0,200	T-03-012080
2	85	6,0	3,5	0,213	T-03-012085
2	90	6,0	3,5	0,225	T-03-012090
2	100	6,0	3,5	0,250	T-03-012100
2	110	6,0	3,5	0,275	T-03-012110
2	120	6,0	3,5	0,300	T-03-012120
2	130	6,0	3,5	0,325	T-03-012130
2	140	6,0	3,5	0,350	T-03-012140
2	160	6,0	3,5	0,401	T-03-012160
2	200	6,0	3,5	0,501	T-03-012200
3	25	6,0	3,5	0,148	T-03-013025
3	30	6,0	3,5	0,174	T-03-013030
3	40	6,0	3,5	0,234	T-03-013040
3	50	6,0	3,5	0,286	T-03-013050
3	60	6,0	3,5	0,340	T-03-013060
3	65	6,0	3,5	0,366	T-03-013065
3	70	6,0	3,5	0,398	T-03-013070
3	80	6,0	3,5	0,454	T-03-013080
3	85	6,0	3,5	0,480	T-03-013085
3	90	6,0	3,5	0,506	T-03-013090
3	100	6,0	3,5	0,564	T-03-013100
3	110	6,0	3,5	0,620	T-03-013110
3	120	6,0	3,5	0,673	T-03-013120
3	130	6,0	3,5	0,735	T-03-013130
3	140	6,0	3,5	0,784	T-03-013140
3	160	6,0	3,5	0,892	T-03-013160
3	200	6,0	3,5	1,108	T-03-013200

TAPES

FABRICS

INSULATION

FASTENERS

INSULATION
MATTRESSES

FASTENING
TECHNIQUES

SD STUDS

CABLE TRAYS

OTHERS

d ₁	L	d ₂ ≈	h≈	Weight (kg/100)	Index
4	25	6,0	3,5	0,265	T-03-014025
4	30	6,0	3,5	0,318	T-03-014030

4	40	6,0	3,5	0,424	T-03-014040
4	50	6,0	3,5	0,480	T-03-014050
4	60	6,0	3,5	0,664	T-03-014060
4	65	6,0	3,5	0,697	T-03-014065
4	70	6,0	3,5	0,730	T-03-014070
4	80	6,0	3,5	0,760	T-03-014080
4	85	6,0	3,5	0,901	T-03-014085
4	90	6,0	3,5	0,954	T-03-014090
4	100	6,0	3,5	0,980	T-03-014100
4	110	6,0	3,5	1,125	T-03-014110
4	120	6,0	3,5	1,270	T-03-014120
4	130	6,0	3,5	1,395	T-03-014130
4	140	6,0	3,5	1,411	T-03-014140
4	160	6,0	3,5	1,705	T-03-014160
4	200	6,0	3,5	2,020	T-03-014200
5	25	6,0	3,5		T-03-015025
5	30	6,0	3,5		T-03-015030
5	40	6,0	3,5		T-03-015040
5	50	6,0	3,5		T-03-015050
5	60	6,0	3,5		T-03-015060
5	70	6,0	3,5		T-03-015070
5	80	6,0	3,5		T-03-015080
5	90	6,0	3,5		T-03-015090
5	100	6,0	3,5		T-03-015100
5	110	6,0	3,5		T-03-015110
5	120	6,0	3,5		T-03-015120
5	130	6,0	3,5		T-03-015130
5	140	6,0	3,5		T-03-015140
5	150	6,0	3,5		T-03-015150
5	160	6,0	3,5		T-03-015160
5	200	6,0	3,5		T-03-015200

MATERIAL: STAINLESS STEEL 1.4301

d ₁	L	d ₂ ≈	h≈	Weight (kg/100)	Index
3	25	6,0	3,5	0,148	T-03-023025
3	30	6,0	3,5	0,174	T-03-023030
3	40	6,0	3,5	0,234	T-03-023040
3	50	6,0	3,5	0,286	T-03-023050
3	60	6,0	3,5	0,340	T-03-023060
3	70	6,0	3,5	0,398	T-03-023070
3	80	6,0	3,5	0,454	T-03-023080
3	90	6,0	3,5	0,506	T-03-023090
3	100	6,0	3,5	0,564	T-03-023100
3	110	6,0	3,5	0,620	T-03-023110
3	120	6,0	3,5	0,610	T-03-023120
3	130	6,0	3,5	0,735	T-03-023130
3	140	6,0	3,5	0,784	T-03-023140
3	150	6,0	3,5	0,840	T-03-023150
3	160	6,0	3,5	0,892	T-03-023160
3	200	6,0	3,5	1,108	T-03-023200

ADDITIONAL INFORMATION

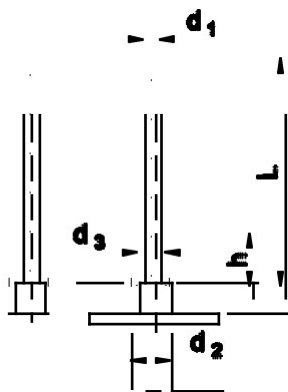
Other dimensions and materials are available on request, eg. stainless steel 1.4571, IS 4 and IS 5 in material 1.4031.

TAPES	FABRICS	INSULATION FASTENERS	INSULATION MATTRESSES	FASTENING TECHNIQUES	SD STUDS	CABLE TRAYS	OTHERS
-------	---------	----------------------	-----------------------	----------------------	----------	-------------	--------

BIMETAL PIN VBS (ALUMINIUM AREA)

Material: copper covered steel, stainless steel 1.4301

(aluminium ending)



Use: assembling the insulation on aluminium surfaces in the marine and land industry. Bimetal pins are made of heat-sealable wire in diameter $\varnothing 3\text{mm}$.

Availability: on request

Logistic minimum:

25mm – 40mm – 2000 pcs./package
 50mm – 100mm – 1000 pcs./package
 from 110mm – 500 pcs./package

MATERIAL: COPPER COVERED STEEL

d_1	L	$d_2 \approx$	$h \approx$	d_3	Weight (kg/100)	Index
3	25	7,8	16	6	0,148	T-03-113025
3	30	7,8	16	6	0,174	T-03-113030
3	40	7,8	16	6	0,234	T-03-113040
3	50	7,8	16	6	0,286	T-03-113050
3	60	7,8	16	6	0,340	T-03-113060
3	65	7,8	16	6	0,366	T-03-113065
3	70	7,8	16	6	0,398	T-03-113070
3	80	7,8	16	6	0,454	T-03-113080
3	85	7,8	16	6	0,480	T-03-113085
3	90	7,8	16	6	0,506	T-03-113090
3	100	7,8	16	6	0,564	T-03-113100
3	110	7,8	16	6	0,620	T-03-113110
3	120	7,8	16	6	0,673	T-03-113120
3	130	7,8	16	6	0,735	T-03-113130
3	140	7,8	16	6	0,784	T-03-113140
3	160	7,8	16	6	0,892	T-03-113160
3	200	7,8	16	6	1,108	T-03-113200

MATERIAL: STAINLESS STEEL 1.4301

d_1	L	$d_2 \approx$	$h \approx$	d_3	Weight (kg/100)	Index
3	25	7,8	16	6	0,148	T-03-123025
3	30	7,8	16	6	0,174	T-03-123030
3	40	7,8	16	6	0,234	T-03-123040
3	50	7,8	16	6	0,286	T-03-123050
3	60	7,8	16	6	0,340	T-03-123060
3	70	7,8	16	6	0,398	T-03-123070
3	80	7,8	16	6	0,454	T-03-123080
3	90	7,8	16	6	0,506	T-03-123090
3	100	7,8	16	6	0,564	T-03-123100
3	110	7,8	16	6	0,620	T-03-123110
3	120	7,8	16	6	0,610	T-03-123120
3	130	7,8	16	6	0,735	T-03-123130
3	140	7,8	16	6	0,784	T-03-123140
3	150	7,8	16	6	0,840	T-03-123150
3	160	7,8	16	6	0,892	T-03-123160
3	200	7,8	16	6	1,108	T-03-123200

TAPES

FABRICS

INSULATION

FASTENERS

INSULATION
MATTRESSES

FASTENING
TECHNIQUES

SD STUDS

CABLE TRAYS

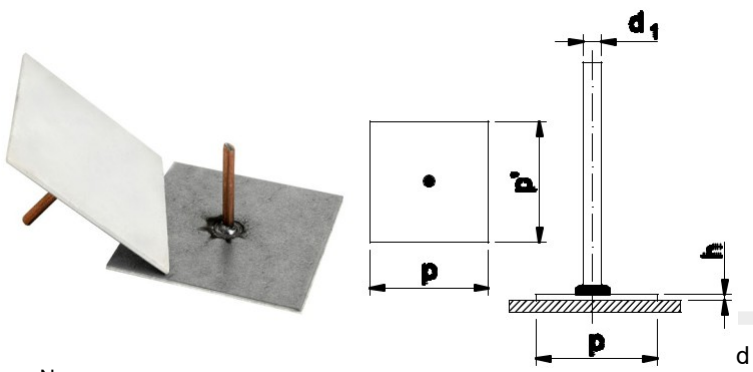
OTHERS

PIN WITH SELF-ADHESIVE HOLDER

Material: copper covered steel, stainless steel 1.4301, holder stainless steel or galvanized

Use: assembling the insulation on surfaces where it is impossible to heat seal the pins (eg. too thin metal plates). Insulation pins are made of heat-sealable wire in diameters range $\varnothing 2\text{mm}$ to $\varnothing 5\text{mm}$. Holder sizes 5x5cm, self-adhesive.

Availability: on request



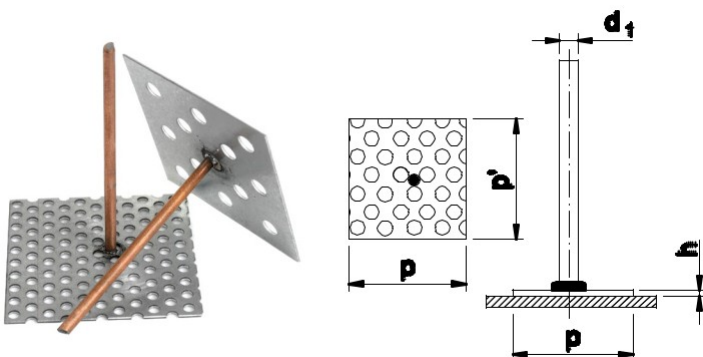
Logistic minimum:
 25mm – 100mm – 1000 pcs./package
 from 110mm – 500 pcs./package

Name	d_1	p	p'	h
Pin with self-adhesive stainless steel holder	ø2;3;4;5	50	50	0,5
Pin with self-adhesive galvanized holder	ø2;3;4;5	50	50	0,7

ADDITIONAL INFORMATION

Available dimensions pins according to the dimensions of the heat-sealable insulating pins.

PIN WITH PERFORATED HOLDER



Material: copper covered steel, stainless steel 1.4301, holder galvanized

Use: assembling the insulation on surfaces where it is impossible to heat seal the pins (eg. too thin metal plates). Insulation pins are made of heat-sealable wire in diameters range Ø2mm to Ø5mm. Holder sizes 5x5cm, assembled using a glue type Sikaflex.

Availability: on request

Logistic minimum:

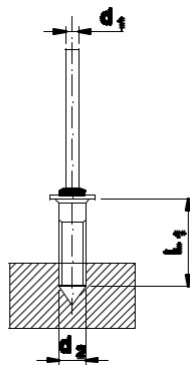
25mm – 100mm – 1000 pcs./package
 from 110mm – 500 pcs./package

Name	d_1	Minimum logistyczne:	h
Pin with perforated galvanized holder	$\varnothing 2;3;4;5$	25mm – 100mm – 1000 szt. /op. od 110mm – 500 szt. /op.	0,7

ADDITIONAL INFORMATION

		INSULATION MATTRESSES	FASTENING TECHNIQUES	SD STUDS	CABLE TRAYS	OTHERS
--	--	-----------------------	----------------------	----------	-------------	--------

PIN WITH SCREW



Material: copper covered steel, stainless steel 1.4301, screw galvanized, stainless steel

Use: supplied with screw in any dimension. Tools are available to purchase to match the screws used. Insulation pins are made of heat-sealable wire in diameters range $\varnothing 2\text{mm}$ to $\varnothing 5\text{mm}$.

Availability: on request

Logistic minimum:

25mm – 40mm – 2000 pcs./package
 50mm – 100mm – 1000 pcs./package
 from 110mm – 500 pcs./package

Name	d_1	d_2	L_1
Pin with screw	$\varnothing 2;3;4;5$	any size	any size

ADDITIONAL INFORMATION

Available dimensions pins according to the dimensions of the heat-sealable insulating pins.

THE ORDERING PROCEDURE FOR PINS

The pins with self-adhesive holders, perforated holders and screw are available in any dimension similar to heat seal insulating pins.

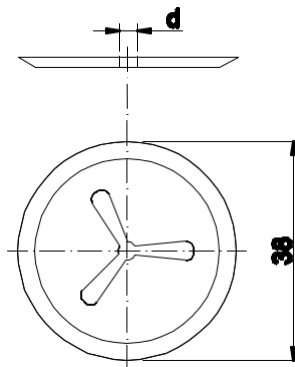
When ordering the above pins the assigned index to the insulation pin should be used (page no 18). At the end of index specific symbol should be used according to the below table:

self-adhesive			perforated		with screw		
Steel	copper	stainless	copper	stainless	copper	stainless	

	covered	1.4301	covered	1.4301	covered	1.4301
Holder	stainless	-SMN	-SNN	-	-	-
	galvanized	-SMO	-SNO	-PM	-PN	-
	with screw	-	-	-	-	-WM -WN

ADDITIONAL INFORMATION For example: Pin with self-adhesive holder, 3 x 40mm, copper covered steel, holder stainless steel – [T-03-013040 - SMN]

CLIP TYPE R



Material: galvanized steel ST, OC; stainless steel 1.4301

Use: applicable for mounting insulation on all types of pins.

Availability: in stock

Logistic minimum: 6000 pcs./package

MATERIAL: STEEL ST

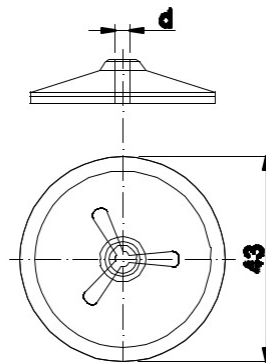
d	Diameter (mm)	Weight (kg/100)	Index
3	38	0,35	T-03-001
4	38	0,35	T-03-002
5	38	0,35	T-03-003

MATERIAL: STEEL OC

d	Diameter (mm)	Weight (kg/100)	Index
3	38	0,35	T-03-004
4	38	0,35	T-03-005
5	38	0,35	T-03-006

MATERIAL: STAINLESS STEEL 1.4301

d	Diameter (mm)	Weight (kg/100)	Index
3	38	0,35	T-03-007
4	38	0,35	T-03-008



Material: galvanized steel ST, OC; stainless steel 1.4301

Use: applicable for mounting insulation on all types of pins. Clip supplied with decorative PVC cover.

Availability: in stock

Logistic minimum: 2500 pcs./package

MATERIAL: STEEL ST

d	Diameter (mm)	Weight (kg/100)	Index
3	43	0,35	T-03-010
4	43	0,35	T-03-011
5	43	0,35	T-03-012

MATERIAL: STEEL OC

d	Diameter (mm)	Weight (kg/100)	Index
3	43	0,35	T-03-013
4	43	0,35	T-03-014
5	43	0,35	T-03-015

MATERIAL: STAINLESS STEEL 1.4301

d	Diameter (mm)	Weight (kg/100)	Index
3	43	0,35	T-03-016
4	43	0,35	T-03-017
5	43	0,35	T-03-018

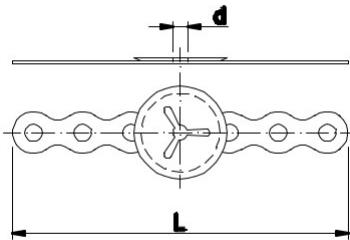
ADDITIONAL INFORMATION

The standard cover of the clip is white.

Other colours are available, eg. silver, black. Index available on request.

TAPES	FABRICS	INSULATION FASTENERS	INSULATION MATTRESSES	FASTENING TECHNIQUES	SD STUDS	CABLE TRAYS	OTHERS
-------	---------	-----------------------------	-----------------------	----------------------	----------	-------------	--------

CLIP TYPE R (WITH STRAP)



Material: galvanized steel ST

Use: the clip with additional strap; applied to hold the assembled electrical wires.

Availability: on request

Logistic minimum: 3000 pcs./package

MATERIAL: STEEL ST

d	Diameter (mm)	L	Weight (kg/100)	Index
3	38	135	0,35	T-03-019
4	38	135	0,35	T-03-020
5	38	135	0,35	T-03-021

ADDITIONAL INFORMATION

The standard width of the strap is 135 mm. Current information on other roll widths is available on request.

THERMAL INSULATION MATTRESSES



Material: heat-resistant mineral wool and fabrics

Use: thermal and acoustic insulation for industrial installations (factories, district heating, heat and power plants, waste incinerators, gas distribution plants, petrochemical plants, refineries, offshore, shipbuilding, extractive industries).

Availability: on request

PRODUCT CHARACTERISTICS

thermal insulation mattresses are installed in places that are difficult to access, which cannot be insulated in a traditional way

designed individually for a given structure on the basis of technical data provided by the customer or after taking measurements by one of our representatives

fabricated in any size and shape adapted to the existing installation

shape, thickness, assembly method is selected each time to the assumed expected parameters

provide excellent thermal and sound insulation

in terms of resistance to high temperature of the working fabric, we make thermal insulation mattresses up to 200°C or above 200°C

insulation mattresses are fabricated in the variant intended for land industries or marine and offshore

ADVANTAGES OF USING THERMAL INSULATION MATTRESSES

high durability of insulation

reduction of inspection downtime and renovations

high flexibility and low weight enable insulation in places where other systems cannot be used

protection against burns

multiple use, no need to dispose of post-renovation waste

protection of machines and other items against high temperatures

easy and clean disassembly by own staff, without the need for specialized training

proper operation of the device and minimization of the risk of related failure with overheating of the machine

easy and quick access to places that require frequent inspections, renovations, service works

perfect insulation of a given element

Insulation mattresses are made of materials that are trimmed with technical fabrics using heat-resistant threads. Mattresses materials have a temperature resistance of up to 1000 °C. We use high quality glass, silicon, pasted, ceramic or aluminium coated fabrics. These fabrics are non-flammable, resistant to high temperatures, chemicals, molds and processes putrefaction, steam, water corrosion.

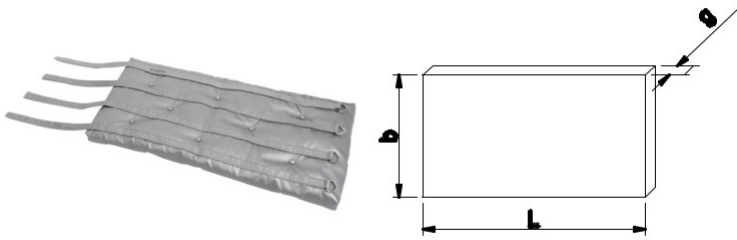
Depending on the conditions, operating temperature and customer requirements, felt, mineral and ceramic wool mats are used as the filling.

Mattresses are equipped with straps, cords, Velcro, hooks, clasps enabling easy and quick assembly / disassembly. This technical solution facilitates servicing, replacement of worn components or organizing planned commissioning of installations.

Use fulfillment	mineral wool, ceramic mat, glass mat
Fabrics used	glass, siliconed, pasted, ceramic, fabric covered with aluminum
Fastening elements	belts, straps, hooks, buckles
Types of fasteners	different variants of joining individual fasteners are possible depending on request

ADDITIONAL INFORMATION Possible types of thermal insulation mattresses are presented on the following pages.

TYPE „A” (RECTANGULAR MATTRESS)



Product technical description:

TL	A1	L x b x g
TM	A2	
e.g. TM-A1-1000 x 300 x 50		

TL – onshore

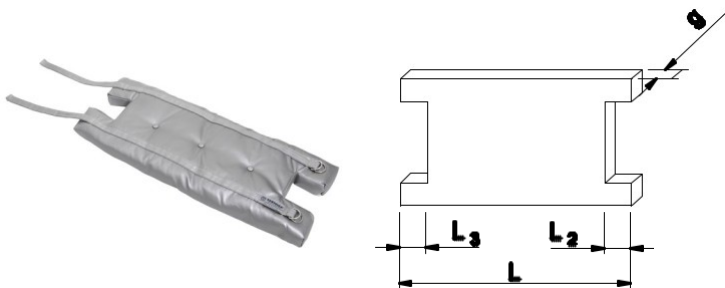
TM – marine and offshore

A1 – work fabric up to 200°C

A2 – working fabric above 200°C

Mark	Dimension	Range
L (mm)	length	20 - 2000
b (mm)	width	20 - 2000
g (mm)	thickness	25, 40, 60, 80, 100

TYPE „B” (RECTANGULAR MATTRESS WITH RECTANGULAR CUT)



Product technical description:

TL	B1	L x b x g
TM	B2	
e.g. TM-B1-1000 x 300 x 50		

TL – onshore

TM – marine and offshore

B1 – work fabric up to 200°C

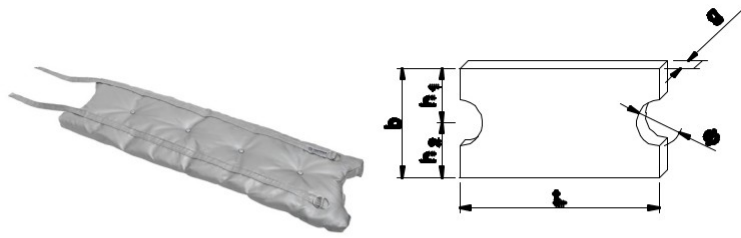
B2 – working fabric above 200°C

Mark	Dimension	Range
L (mm)	length	20 - 2000
b (mm)	width	20 - 2000
+ g (mm)	thickness	25, 40, 60, 80, 100

TYPE „C” (RECTANGULAR MATTRESS WITH ROUND CUT)



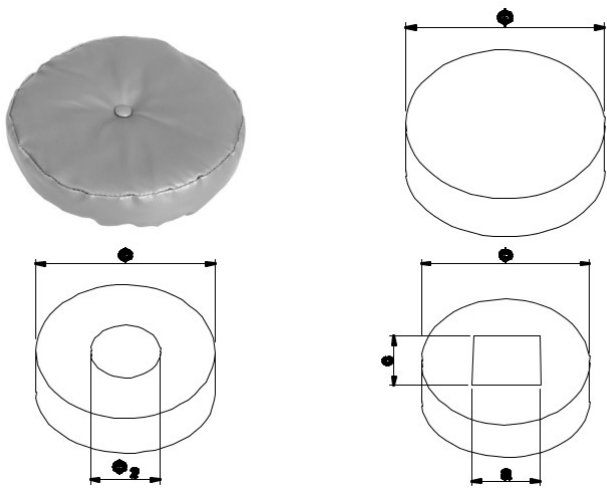
Product technical description:



TL	C1	L x b x g
TM	C2	
e.g. TM-C1-1000 x 300 x 50		
TL – onshore		
TM – marine and offshore		
C1 – work fabric up to 200°C		
C2 – working fabric above 200°C		

Mark	Dimension	Range
L (mm)	length	20 - 2000
b (mm)	width	20 - 2000
g (mm)	thickness	25, 40, 60, 80, 100

TYPE „D” (LID, WITH OR WITHOUT CUT)



Product technical description:

TL	D1	Ø x g
TM	D2	
e.g. TL-D1-300 x 50		
TL – onshore		
TM – marine and offshore		
D1 – work fabric up to 200°C		
D2 – working fabric above 200°C		

Mark	Dimension	Range
L (mm)	length	20 - 2000
b (mm)	width	20 - 2000
g (mm)	thickness	25, 40, 60, 80, 100
Ø (mm)	thickness	20 -1000

TYPE „S” (TEE CONNECTOR INSULATION MATTRESS)

Product technical description:

TL

S1

L x b x g

TM

S2

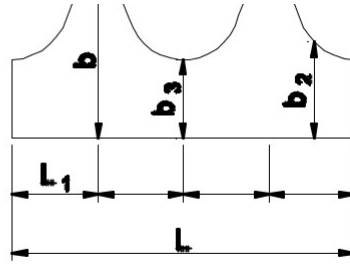
e.g. TM-S1-1000 x 300 x 50

TL – onshore

TM – marine and offshore

S1 – work fabric up to 200°C

S2 – working fabric above 200°C



Mark

Dimension

L (mm)

total length

L₁ (mm)

distance between the lowest and highest point

b (mm)

highest point

b² (mm)

average point

b₃ (mm)

lowest point

TYPE „N” (ATYPICAL)

Product technical description:

TL

N1

L x b x g

TM

N2

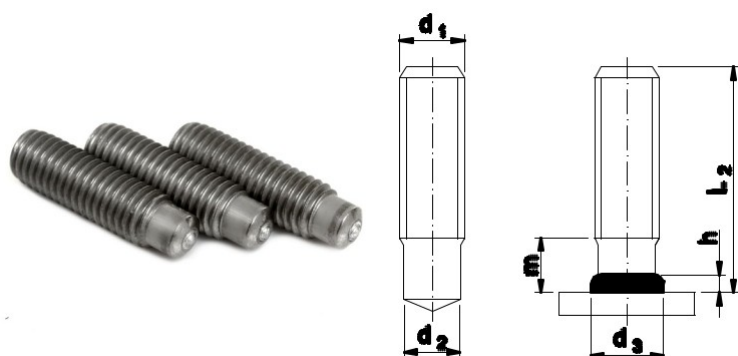
np. TM-N1-300 x 50

TL – onshore

TM – marine and offshore

N1 – work fabric up to 200°C

N2 – working fabric above 200°C



Material: stainless steel, steel 4.8

Use: threaded mounting studs with undercut threads and shafts come in a wide range of applications in the marine and land industry.

Availability: on request

Logistic minimum: 100 pcs/package

MATERIAL: STAINLESS STEEL

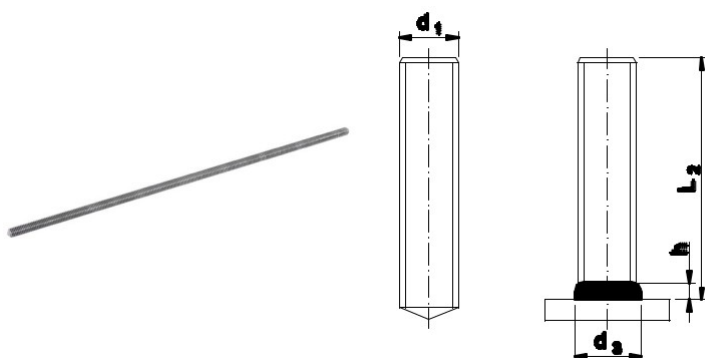
d_1	L_2	d_2	$m \approx$	d_3	$h \approx$	Ceramic Ring	Index
M6	15	4,7	4,5	6,5	2,5	RF6	T-05-RD1M6015
M6	20	4,7	4,5	6,5	2,5	RF6	T-05-RD1M6020
M6	25	4,7	4,5	6,5	2,5	RF6	T-05-RD1M6025
M6	30	4,7	4,5	6,5	2,5	RF6	T-05-RD1M6030
M6	35	4,7	4,5	6,5	2,5	RF6	T-05-RD1M6035
M6	40	4,7	4,5	6,5	2,5	RF6	T-05-RD1M6040
M6	45	4,7	4,5	6,5	2,5	RF6	T-05-RD1M6045
M6	50	4,7	4,5	6,5	2,5	RF6	T-05-RD1M6050
M8	20	6,2	4,5	8,8	2,5	RF8	T-05-RD1M8020
M8	25	6,2	4,5	8,8	2,5	RF8	T-05-RD1M8025
M8	30	6,2	4,5	8,8	2,5	RF8	T-05-RD1M8030
M8	35	6,2	4,5	8,8	2,5	RF8	T-05-RD1M8035
M8	40	6,2	4,5	8,8	2,5	RF8	T-05-RD1M8040
M8	45	6,2	4,5	8,8	2,5	RF8	T-05-RD1M8045
M8	50	6,2	4,5	8,8	2,5	RF8	T-05-RD1M8050
M10	20	7,9	5,0	11,0	3,0	RF10	T-05-RD1M10020
M10	25	7,9	5,0	11,0	3,0	RF10	T-05-RD1M10025
M10	30	7,9	5,0	11,0	3,0	RF10	T-05-RD1M10030
M10	35	7,9	5,0	11,0	3,0	RF10	T-05-RD1M10035
M10	40	7,9	5,0	11,0	3,0	RF10	T-05-RD1M10040
M10	45	7,9	5,0	11,0	3,0	RF10	T-05-RD1M10045
M10	50	7,9	5,0	11,0	3,0	RF10	T-05-RD1M10050
M10	55	7,9	5,0	11,0	3,0	RF10	T-05-RD1M10055
M10	60	7,9	5,0	11,0	3,0	RF10	T-05-RD1M10060
M12	20	9,5	6,5	13,0	4,0	RF12	T-05-RD1M12020
M12	25	9,5	6,5	13,0	4,0	RF12	T-05-RD1M12025
M12	30	9,5	6,5	13,0	4,0	RF12	T-05-RD1M12030
M12	35	9,5	6,5	13,0	4,0	RF12	T-05-RD1M12035
M12	40	9,5	6,5	13,0	4,0	RF12	T-05-RD1M12040
M12	45	9,5	6,5	13,0	4,0	RF12	T-05-RD1M12045
M12	50	9,5	6,5	13,0	4,0	RF12	T-05-RD1M12050
M12	55	9,5	6,5	13,0	4,0	RF12	T-05-RD1M12055
M12	60	9,5	6,5	13,0	4,0	RF12	T-05-RD1M12060
M16	30	13,2	11,0	17,0	5,0	RF16	T-05-RD1M16030
M16	35	13,2	11,0	17,0	5,0	RF16	T-05-RD1M16035
M16	40	13,2	11,0	17,0	5,0	RF16	T-05-RD1M16040
M16	45	13,2	11,0	17,0	5,0	RF16	T-05-RD1M16045
M16	50	13,2	11,0	17,0	5,0	RF16	T-05-RD1M16050
M16	55	13,2	11,0	17,0	5,0	RF16	T-05-RD1M16055
M16	60	13,2	11,0	17,0	5,0	RF16	T-05-RD1M16060
M16	65	13,2	11,0	17,0	5,0	RF16	T-05-RD1M16065

d ₁	L ₂	d ₂	m ≈	d ₃	h ≈	Ceramic Ring	Index
M20	35	16,5	13,0	21,0	6,0	RF20	T-05-RD1M20035
M20	40	16,5	13,0	21,0	6,0	RF20	T-05-RD1M20040
M20	45	16,5	13,0	21,0	6,0	RF20	T-05-RD1M20045
M20	50	16,5	13,0	21,0	6,0	RF20	T-05-RD1M20050
M20	55	16,5	13,0	21,0	6,0	RF20	T-05-RD1M20055
M20	60	16,5	13,0	21,0	6,0	RF20	T-05-RD1M20060
M20	65	16,5	13,0	21,0	6,0	RF20	T-05-RD1M20065
M20	70	16,5	13,0	21,0	6,0	RF20	T-05-RD1M20070
M20	100	16,5	13,0	21,0	6,0	RF20	T-05-RD1M20100

MATERIAL: STEEL 4.8

d ₁	L ₂	d ₂	m ≈	d ₃	h ≈	Ceramic Ring	Index
M6	15	4,7	4,5	6,5	2,5	RF6	T-05-RD2M6015
M6	20	4,7	4,5	6,5	2,5	RF6	T-05-RD2M6020
M6	25	4,7	4,5	6,5	2,5	RF6	T-05-RD2M6025
M6	30	4,7	4,5	6,5	2,5	RF6	T-05-RD2M6030
M6	35	4,7	4,5	6,5	2,5	RF6	T-05-RD2M6035
M6	40	4,7	4,5	6,5	2,5	RF6	T-05-RD2M6040
M6	45	4,7	4,5	6,5	2,5	RF6	T-05-RD2M6045
M6	50	4,7	4,5	6,5	2,5	RF6	T-05-RD2M6050
M8	20	6,2	4,5	8,8	2,5	RF8	T-05-RD2M8020
M8	25	6,2	4,5	8,8	2,5	RF8	T-05-RD2M8025
M8	30	6,2	4,5	8,8	2,5	RF8	T-05-RD2M8030
M8	35	6,2	4,5	8,8	2,5	RF8	T-05-RD2M8035
M8	40	6,2	4,5	8,8	2,5	RF8	T-05-RD2M8040
M8	45	6,2	4,5	8,8	2,5	RF8	T-05-RD2M8045
M8	50	6,2	4,5	8,8	2,5	RF8	T-05-RD2M8050
M10	20	7,9	5,0	11,0	3,0	RF10	T-05-RD2M10020
M10	25	7,9	5,0	11,0	3,0	RF10	T-05-RD2M10025
M10	30	7,9	5,0	11,0	3,0	RF10	T-05-RD2M10030
M10	35	7,9	5,0	11,0	3,0	RF10	T-05-RD2M10035
M10	40	7,9	5,0	11,0	3,0	RF10	T-05-RD2M10040
M10	45	7,9	5,0	11,0	3,0	RF10	T-05-RD2M10045
M10	50	7,9	5,0	11,0	3,0	RF10	T-05-RD2M10050
M10	55	7,9	5,0	11,0	3,0	RF10	T-05-RD2M10055
M10	60	7,9	5,0	11,0	3,0	RF10	T-05-RD2M10060
M12	20	9,5	6,5	13,0	4,0	RF12	T-05-RD2M12020
M12	25	9,5	6,5	13,0	4,0	RF12	T-05-RD2M12025
M12	30	9,5	6,5	13,0	4,0	RF12	T-05-RD2M12030
M12	35	9,5	6,5	13,0	4,0	RF12	T-05-RD2M12035
M12	40	9,5	6,5	13,0	4,0	RF12	T-05-RD2M12040
M12	45	9,5	6,5	13,0	4,0	RF12	T-05-RD2M12045
M12	50	9,5	6,5	13,0	4,0	RF12	T-05-RD2M12050
M12	55	9,5	6,5	13,0	4,0	RF12	T-05-RD2M12055
M12	60	9,5	6,5	13,0	4,0	RF12	T-05-RD2M12060
M16	30	13,2	11,0	17,0	5,0	RF16	T-05-RD2M16030
M16	35	13,2	11,0	17,0	5,0	RF16	T-05-RD2M16035
M16	40	13,2	11,0	17,0	5,0	RF16	T-05-RD2M16040
M16	45	13,2	11,0	17,0	5,0	RF16	T-05-RD2M16045
M16	50	13,2	11,0	17,0	5,0	RF16	T-05-RD2M16050
M16	55	13,2	11,0	17,0	5,0	RF16	T-05-RD2M16055
M16	60	13,2	11,0	17,0	5,0	RF16	T-05-RD2M16060
M16	65	13,2	11,0	17,0	5,0	RF16	T-05-RD2M16065
M20	35	16,5	13,0	21,0	6,0	RF20	T-05-RD2M20035
M20	40	16,5	13,0	21,0	6,0	RF20	T-05-RD2M20040
M20	45	16,5	13,0	21,0	6,0	RF20	T-05-RD2M20045
M20	50	16,5	13,0	21,0	6,0	RF20	T-05-RD2M20050
M20	55	16,5	13,0	21,0	6,0	RF20	T-05-RD2M20055
M20	60	16,5	13,0	21,0	6,0	RF20	T-05-RD2M20060
M20	65	16,5	13,0	21,0	6,0	RF20	T-05-RD2M20065
M20	70	16,5	13,0	21,0	6,0	RF20	T-05-RD2M20070
M20	100	16,5	13,0	21,0	6,0	RF20	T-05-RD2M20100

Other dimensions available on request.



Material: stainless steel, steel 4.8

Use: mounting studs are fully threaded and usable in a wide range of marine and land industry.

Availability: on request

Logistic minimum: 100 pcs/package

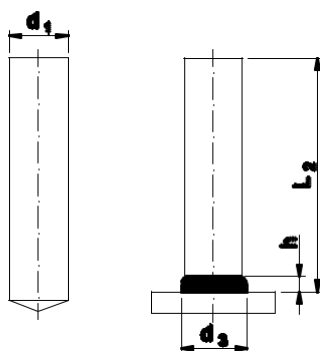
MATERIAL: STAINLESS STEEL

d_1	L_2	d_3	$h \approx$	Ceramic Ring	Index
M6	20	8,7	3,2	UF6	T-05-DD1M6020
M6	25	8,7	3,2	UF6	T-05-DD1M6025
M6	30	8,7	3,2	UF6	T-05-DD1M6030
M6	35	8,7	3,2	UF6	T-05-DD1M6035
M6	40	8,7	3,2	UF6	T-05-DD1M6040
M6	45	8,7	3,2	UF6	T-05-DD1M6045
M6	50	8,7	3,2	UF6	T-05-DD1M6050
M6	55	8,7	3,2	UF6	T-05-DD1M6055
M6	60	8,7	3,2	UF6	T-05-DD1M6060
M8	20	11,0	3,5	UF8	T-05-DD1M8020
M8	25	11,0	3,5	UF8	T-05-DD1M8025
M8	30	11,0	3,5	UF8	T-05-DD1M8030
M8	35	11,0	3,5	UF8	T-05-DD1M8035
M8	40	11,0	3,5	UF8	T-05-DD1M8040
M8	45	11,0	3,5	UF8	T-05-DD1M8045
M8	50	11,0	3,5	UF8	T-05-DD1M8050
M8	55	11,0	3,5	UF8	T-05-DD1M8055
M8	60	11,0	3,5	UF8	T-05-DD1M8060
M10	20	13,5	3,5	UF10	T-05-DD1M10020
M10	25	13,5	3,5	UF10	T-05-DD1M10025
M10	30	13,5	3,5	UF10	T-05-DD1M10030
M10	35	13,5	3,5	UF10	T-05-DD1M10035
M10	40	13,5	3,5	UF10	T-05-DD1M10040
M10	45	13,5	3,5	UF10	T-05-DD1M10045
M10	50	13,5	3,5	UF10	T-05-DD1M10050
M10	55	13,5	3,5	UF10	T-05-DD1M10055
M10	60	13,5	3,5	UF10	T-05-DD1M10060
M12	20	15,5	4,5	UF12	T-05-DD1M12020
M12	25	15,5	4,5	UF12	T-05-DD1M12025
M12	30	15,5	4,5	UF12	T-05-DD1M12030
M12	35	15,5	4,5	UF12	T-05-DD1M12035
M12	40	15,5	4,5	UF12	T-05-DD1M12040
M12	45	15,5	4,5	UF12	T-05-DD1M12045
M12	50	15,5	4,5	UF12	T-05-DD1M12050
M12	55	15,5	4,5	UF12	T-05-DD1M12055
M12	60	15,5	4,5	UF12	T-05-DD1M12060
M16	30	20,5	7,0	UF16	T-05-DD1M16030
M16	35	20,5	7,0	UF16	T-05-DD1M16035
M16	40	20,5	7,0	UF16	T-05-DD1M16040
M16	45	20,5	7,0	UF16	T-05-DD1M16045
M16	50	20,5	7,0	UF16	T-05-DD1M16050
M16	55	20,5	7,0	UF16	T-05-DD1M16055
M16	60	20,5	7,0	UF16	T-05-DD1M16060
M16	65	20,5	7,0	UF16	T-05-DD1M16065

d ₁	L ₂	d ₃	h ≈	Ceramic Ring	Index
M6	20	8,7	3,2	UF6	T-05-DD2M6020
M6	25	8,7	3,2	UF6	T-05-DD2M6025
M6	30	8,7	3,2	UF6	T-05-DD2M6030
M6	35	8,7	3,2	UF6	T-05-DD2M6035
M6	40	8,7	3,2	UF6	T-05-DD2M6040
M6	45	8,7	3,2	UF6	T-05-DD2M6045
M6	50	8,7	3,2	UF6	T-05-DD2M6050
M6	55	8,7	3,2	UF6	T-05-DD2M6055
M6	60	8,7	3,2	UF6	T-05-DD2M6060
M8	20	11,0	3,5	UF8	T-05-DD2M8020
M8	25	11,0	3,5	UF8	T-05-DD2M8025
M8	30	11,0	3,5	UF8	T-05-DD2M8030
M8	35	11,0	3,5	UF8	T-05-DD2M8035
M8	40	11,0	3,5	UF8	T-05-DD2M8040
M8	45	11,0	3,5	UF8	T-05-DD2M8045
M8	50	11,0	3,5	UF8	T-05-DD2M8050
M8	55	11,0	3,5	UF8	T-05-DD2M8055
M8	60	11,0	3,5	UF8	T-05-DD2M8060
M10	20	13,5	3,5	UF10	T-05-DD2M10020
M10	25	13,5	3,5	UF10	T-05-DD2M10025
M10	30	13,5	3,5	UF10	T-05-DD2M10030
M10	35	13,5	3,5	UF10	T-05-DD2M10035
M10	40	13,5	3,5	UF10	T-05-DD2M10040
M10	45	13,5	3,5	UF10	T-05-DD2M10045
M10	50	13,5	3,5	UF10	T-05-DD2M10050
M10	55	13,5	3,5	UF10	T-05-DD2M10055
M10	60	13,5	3,5	UF10	T-05-DD2M10060
M12	20	15,5	4,5	UF12	T-05-DD2M12020
M12	25	15,5	4,5	UF12	T-05-DD2M12025
M12	30	15,5	4,5	UF12	T-05-DD2M12030
M12	35	15,5	4,5	UF12	T-05-DD2M12035
M12	40	15,5	4,5	UF12	T-05-DD2M12040
M12	45	15,5	4,5	UF12	T-05-DD2M12045
M12	50	15,5	4,5	UF12	T-05-DD2M12050
M12	55	15,5	4,5	UF12	T-05-DD2M12055
M12	60	15,5	4,5	UF12	T-05-DD2M12060
M16	30	20,5	7,0	UF16	T-05-DD2M16030
M16	35	20,5	7,0	UF16	T-05-DD2M16035
M16	40	20,5	7,0	UF16	T-05-DD2M16040
M16	45	20,5	7,0	UF16	T-05-DD2M16045
M16	50	20,5	7,0	UF16	T-05-DD2M16050
M16	55	20,5	7,0	UF16	T-05-DD2M16055
M16	60	20,5	7,0	UF16	T-05-DD2M16060
M16	65	20,5	7,0	UF16	T-05-DD2M16065

ADDITIONAL
INFORMATION

Standard lengths up to 100mm available. Other dimensions available on request.



Material: stainless steel, steel 4.8

Use: unthreaded mounting studs come in a wide range of applications in the marine and land industry.

Availability: on request

Logistic minimum: 100 pcs/package

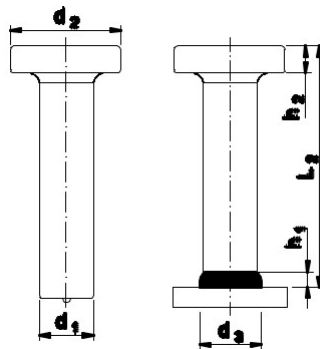
MATERIAL: STAINLESS STEEL

d_1	L_2	d_3	$h \approx$	Ferrule	Index
6	20	8,5	4,0	UF6	T-05-UD16020
6	25	8,5	4,0	UF6	T-05-UD16025
6	30	8,5	4,0	UF6	T-05-UD16030
6	35	8,5	4,0	UF6	T-05-UD16035
6	40	8,5	4,0	UF6	T-05-UD16040
6	45	8,5	4,0	UF6	T-05-UD16045
6	50	8,5	4,0	UF6	T-05-UD16050
6	55	8,5	4,0	UF6	T-05-UD16055
6	60	8,5	4,0	UF6	T-05-UD16060
8	20	11,0	4,0	UF8	T-05-UD18020
8	25	11,0	4,0	UF8	T-05-UD18025
8	30	11,0	4,0	UF8	T-05-UD18030
8	35	11,0	4,0	UF8	T-05-UD18035
8	40	11,0	4,0	UF8	T-05-UD18040
8	45	11,0	4,0	UF8	T-05-UD18045
8	50	11,0	4,0	UF8	T-05-UD18050
8	55	11,0	4,0	UF8	T-05-UD18055
8	60	11,0	4,0	UF8	T-05-UD18060
10	20	13,0	4,0	UF10	T-05-UD110020
10	25	13,0	4,0	UF10	T-05-UD110025
10	30	13,0	4,0	UF10	T-05-UD110030
10	35	13,0	4,0	UF10	T-05-UD110035
10	40	13,0	4,0	UF10	T-05-UD110040
10	45	13,0	4,0	UF10	T-05-UD110045
10	50	13,0	4,0	UF10	T-05-UD110050
10	55	13,0	4,0	UF10	T-05-UD110055
10	60	13,0	4,0	UF10	T-05-UD110060
12	20	16,0	4,0	UF12	T-05-UD112020
12	25	16,0	4,0	UF12	T-05-UD112025
12	30	16,0	4,0	UF12	T-05-UD112030
12	35	16,0	4,0	UF12	T-05-UD112035
12	40	16,0	4,0	UF12	T-05-UD112040
12	45	16,0	4,0	UF12	T-05-UD112045
12	50	16,0	4,0	UF12	T-05-UD112050
12	55	16,0	4,0	UF12	T-05-UD112055
12	60	16,0	4,0	UF12	T-05-UD112060
16	30	20,0	4,0	UF16	T-05-UD116030
16	35	20,0	4,0	UF16	T-05-UD116035
16	40	20,0	4,0	UF16	T-05-UD116040
16	45	20,0	4,0	UF16	T-05-UD116045
16	50	20,0	4,0	UF16	T-05-UD116050
16	55	20,0	4,0	UF16	T-05-UD116055
16	60	20,0	4,0	UF16	T-05-UD116060
16	65	20,0	4,0	UF16	T-05-UD116065

d ₁	L ₂	d ₃	h ≈	Ferrule	Index
6	20	8,5	4,0	UF6	T-05-UD26020
6	25	8,5	4,0	UF6	T-05-UD26025
6	30	8,5	4,0	UF6	T-05-UD26030
6	35	8,5	4,0	UF6	T-05-UD26035
6	40	8,5	4,0	UF6	T-05-UD26040
6	45	8,5	4,0	UF6	T-05-UD26045
6	50	8,5	4,0	UF6	T-05-UD26050
6	55	8,5	4,0	UF6	T-05-UD26055
6	60	8,5	4,0	UF6	T-05-UD26060
8	20	11,0	4,0	UF8	T-05-UD28020
8	25	11,0	4,0	UF8	T-05-UD28025
8	30	11,0	4,0	UF8	T-05-UD28030
8	35	11,0	4,0	UF8	T-05-UD28035
8	40	11,0	4,0	UF8	T-05-UD28040
8	45	11,0	4,0	UF8	T-05-UD28045
8	50	11,0	4,0	UF8	T-05-UD28050
8	55	11,0	4,0	UF8	T-05-UD28055
8	60	11,0	4,0	UF8	T-05-UD28060
10	20	13,0	4,0	UF10	T-05-UD210020
10	25	13,0	4,0	UF10	T-05-UD210025
10	30	13,0	4,0	UF10	T-05-UD210030
10	35	13,0	4,0	UF10	T-05-UD210035
10	40	13,0	4,0	UF10	T-05-UD210040
10	45	13,0	4,0	UF10	T-05-UD210045
10	50	13,0	4,0	UF10	T-05-UD210050
10	55	13,0	4,0	UF10	T-05-UD210055
10	60	13,0	4,0	UF10	T-05-UD210060
12	20	16,0	4,0	UF12	T-05-UD212020
12	25	16,0	4,0	UF12	T-05-UD212025
12	30	16,0	4,0	UF12	T-05-UD212030
12	35	16,0	4,0	UF12	T-05-UD212035
12	40	16,0	4,0	UF12	T-05-UD212040
12	45	16,0	4,0	UF12	T-05-UD212045
12	50	16,0	4,0	UF12	T-05-UD212050
12	55	16,0	4,0	UF12	T-05-UD212055
12	60	16,0	4,0	UF12	T-05-UD212060
16	30	20,0	4,0	UF16	T-05-UD216030
16	35	20,0	4,0	UF16	T-05-UD216035
16	40	20,0	4,0	UF16	T-05-UD216040
16	45	20,0	4,0	UF16	T-05-UD216045
16	50	20,0	4,0	UF16	T-05-UD216050
16	55	20,0	4,0	UF16	T-05-UD216055
16	60	20,0	4,0	UF16	T-05-UD216060
16	65	20,0	4,0	UF16	T-05-UD216065

ADDITIONAL
INFORMATION

Standard lengths up to 100mm available. Other dimensions available on request.



Material: structural steel S235J2+C450
or S355J2+C450

Use: studs are welded on the surface of steel structures, the studs poured with concrete creates the kind of connector between steel construction and concrete. It has European Technical Approval and CE.

Availability: in stock

Logistic minimum: 100 pcs/package

MATERIAL: STRUCTURAL STEEL S235J2

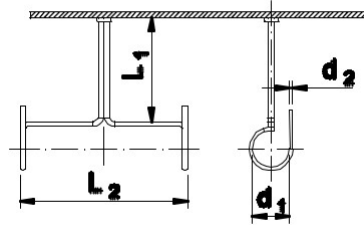
d ₁	L ₂	h ₁	d ₂	d ₃	h ₂	Index
10	50	2,5	19	13	7	T-06-SD10050
10	75	2,5	19	13	7	T-06-SD10075
10	100	2,5	19	13	7	T-06-SD10100
10	125	2,5	19	13	7	T-06-SD10125
10	150	2,5	19	13	7	T-06-SD10150
10	175	2,5	19	13	7	T-06-SD10175
10	200	2,5	19	13	7	T-06-SD10200
13	50	3	25	17	8	T-06-SD13050
13	75	3	25	17	8	T-06-SD13075
13	100	3	25	17	8	T-06-SD13100
13	125	3	25	17	8	T-06-SD13125
13	150	3	25	17	8	T-06-SD13150
13	175	3	25	17	8	T-06-SD13175
13	200	3	25	17	8	T-06-SD13200
13	225	3	25	17	8	T-06-SD13225
13	250	3	25	17	8	T-06-SD13250
13	300	3	25	17	8	T-06-SD13300
13	350	3	25	17	8	T-06-SD13350
13	400	3	25	17	8	T-06-SD13400
16	50	4,5	32	21	8	T-06-SD16050
16	75	4,5	32	21	8	T-06-SD16075
16	100	4,5	32	21	8	T-06-SD16100
16	125	4,5	32	21	8	T-06-SD16125
16	150	4,5	32	21	8	T-06-SD16150
16	175	4,5	32	21	8	T-06-SD16175
16	200	4,5	32	21	8	T-06-SD16200
16	225	4,5	32	21	8	T-06-SD16225
16	250	4,5	32	21	8	T-06-SD16250
16	275	4,5	32	21	8	T-06-SD16275
16	300	4,5	32	21	8	T-06-SD16300
16	350	4,5	32	21	8	T-06-SD16350
16	400	4,5	32	21	8	T-06-SD16400
16	525	4,5	32	21	8	T-06-SD16525

d ₁	L ₂	h ₁	d ₂	d ₃	h ₂	Index
19	75	6	32	23	10	T-06-SD19075
19	80	6	32	23	10	T-06-SD19080
19	90	6	32	23	10	T-06-SD19090
19	100	6	32	23	10	T-06-SD19100
19	125	6	32	23	10	T-06-SD19125
19	150	6	32	23	10	T-06-SD19150
19	175	6	32	23	10	T-06-SD19175
19	200	6	32	23	10	T-06-SD19200
19	225	6	32	23	10	T-06-SD19225
19	250	6	32	23	10	T-06-SD19250
19	275	6	32	23	10	T-06-SD19275
19	300	6	32	23	10	T-06-SD19300
19	350	6	32	23	10	T-06-SD19350
19	400	6	32	23	10	T-06-SD19400
19	525	6	32	23	10	T-06-SD19525
22	75	6	35	29	10	T-06-SD22075
22	90	6	35	29	10	T-06-SD22090
22	100	6	35	29	10	T-06-SD22100
22	125	6	35	29	10	T-06-SD22125
22	150	6	35	29	10	T-06-SD22150
22	175	6	35	29	10	T-06-SD22175
22	200	6	35	29	10	T-06-SD22200
22	225	6	35	29	10	T-06-SD22225
22	250	6	35	29	10	T-06-SD22250
22	300	6	35	29	10	T-06-SD22300
22	350	6	35	29	10	T-06-SD22350
22	400	6	35	29	10	T-06-SD22400
22	450	6	35	29	10	T-06-SD22450
22	525	6	35	29	10	T-06-SD22525
25*	75	7	40	31	12	T-06-SD25075
25	100	7	40	31	12	T-06-SD25100
25	125	7	40	31	12	T-06-SD25125
25	150	7	40	31	12	T-06-SD25150
25	175	7	40	31	12	T-06-SD25175
25	200	7	40	31	12	T-06-SD25200
25	225	7	40	31	12	T-06-SD25225
25	250	7	40	31	12	T-06-SD25250
25	300	7	40	31	12	T-06-SD25300
25	350	7	40	31	12	T-06-SD25350
25	400	7	40	31	12	T-06-SD25400
25	450	7	40	31	12	T-06-SD25450
25	525	7	40	31	12	T-06-SD25525

* during the approval process conducted by ITB

ADDITIONAL INFORMATION Other dimensions available on request.

OPEN CABLE HANGER



Material: copper covered steel,
stainless steel 1.4301

Use: the system of hangs usable during the cable installation.

Availability: in stock

Logistic minimum: 50 pcs/package

MATERIAL: COPPER COVERED STEEL

Name	L ₁	L ₂	d ₁	d ₂	Index
Open cable hanger 60	60	280	45	6	T-07-001
Open cable hanger 100	100	280	45	6	T-07-002
Open cable hanger 150	150	280	45	6	T-07-003
Open cable hanger 250	250	280	45	6	T-07-004

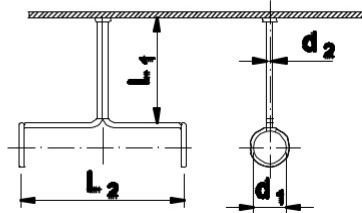
MATERIAL: STAINLESS STEEL 1.4301

Name	L ₁	L ₂	d ₁	d ₂	Index
Open cable hanger 60	60	280	45	6	T-07-005
Open cable hanger 100	100	280	45	6	T-07-006
Open cable hanger 150	150	280	45	6	T-07-007
Open cable hanger 250	250	280	45	6	T-07-008

ADDITIONAL INFORMATION

Other dimensions and materials are available on request.

CLOSED CABLE HANGER



Material: copper covered steel,
stainless steel 1.4301

Use: the system of hangs usable during the cable installation.

Availability: in stock

Logistic minimum: 50 pcs/package

MATERIAL: COPPER COVERED STEEL

Name	L ₁	L ₂	d ₁	d ₂	Index
Closed cable hanger 60	60	280	45	6	T-07-009
Closed cable hanger 100	100	280	45	6	T-07-010
Closed cable hanger 150	150	280	45	6	T-07-011
Closed cable hanger 250	250	280	45	6	T-07-012

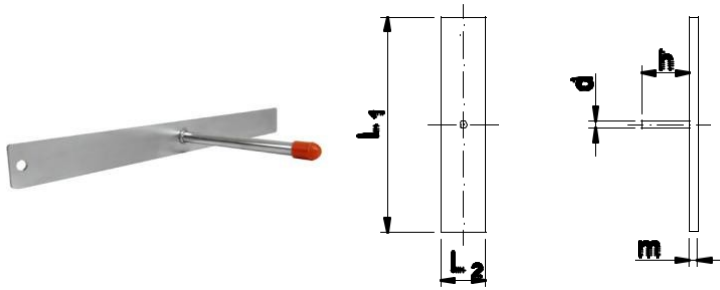
MATERIAL: STAINLESS STEEL 1.4301

Name	L ₁	L ₂	d ₁	d ₂	Index
Closed cable hanger 60	60	280	45	6	T-07-013
Closed cable hanger 100	100	280	45	6	T-07-014
Closed cable hanger 150	150	280	45	6	T-07-015
Closed cable hanger 250	250	280	45	6	T-07-016

ADDITIONAL INFORMATION

Other dimensions and materials are available on request.

FLAT BAR CABLE HANGER



Material: galvanized steel

Use: the system of hangs usable during the cable installation.

Availability: in stock

Logistic minimum: 100 pcs/package

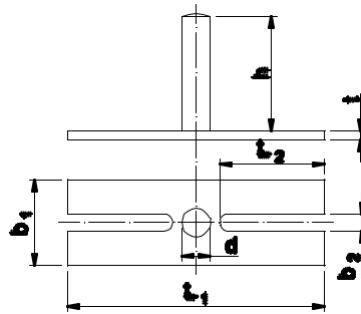
MATERIAL: GALVANIZED STEEL

Name	L ₁	L ₂	d	h	m	Index
Flat bar hanger 320x30x40	320	30	10	40	3	T-07-021
Flat bar hanger 320x30x120	320	30	10	120	3	T-07-022
Flat bar hanger 320x50x40	320	50	10	40	3	T-07-023
Flat bar hanger 320x50x120	320	50	10	120	3	T-07-024

ADDITIONAL INFORMATION

Other dimensions and materials are available on request.

CABLE HANGER TYPE H



Material: galvanized steel

Use: slings system welded on both sides, used during cabling assembly.

Availability: on request

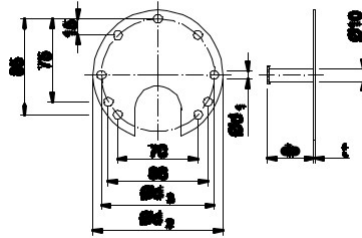
MATERIAL: GALVANIZED STEEL

Name	b ₁	b ₂	d	h	L ₁	L ₂	t	Index
Cable hanger type h90	30	6	10	40	90	37	3	T-07-025
Cable hanger type h120	30	6	10	40	110	47	3	T-07-026

ADDITIONAL INFORMATION

Other dimensions and materials are available on request.

ROUND SUPPORT



Material: galvanized steel

Use: welded bracket, used for fixing electrical equipment on ships. Support fitting for electrical equipment

Availability: on request

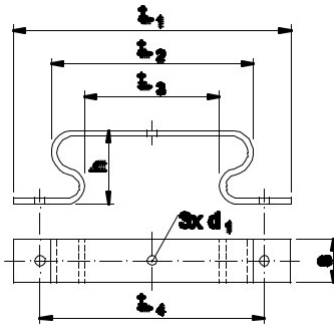
MATERIAL: GALVANIZED STEEL

Name	d ₁	d ₂	d ₃	L	t	Index
Round support 40	7,5	115	100	40	3	T-07-30
Round support 120	7,5	115	100	120	3	T-07-31

ADDITIONAL INFORMATION

Other dimensions and materials are available on request.

OMEGA CONNECTOR



Material: galvanized steel, stainless steel 1.4301

Use: the distance between the plates, mounted e.g. on tanks, boilers in the marine industry.

Availability: in stock

Logistic minimum: 400 pcs/package

MATERIAL: GALVANIZED STEEL

Name	L ₁	L ₂	L ₃	L ₄	s	d ₁	h	Index
Omega Connector	150	105	65	120	30	5,3	40	T-08-001-12030

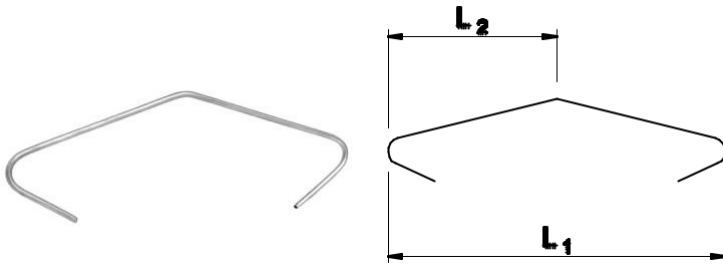
MATERIAL: STAINLESS STEEL 1.4301

Name	L ₁	L ₂	L ₃	L ₄	s	d ₁	h	Index
Omega Connector	150	105	65	120	30	5,3	40	T-08-002-12030

ADDITIONAL INFORMATION

Other dimensions and materials are available on request.

TERMIKA WOOL HOOKS



Material: galvanized steel

Use: connection of the insulation mats to eliminate the thermal bridge and reducing heat loss as well as securing the formwork sheet metal against excessive heating up.

Availability: in stock

Minimum logistyczne: 400 pcs./package

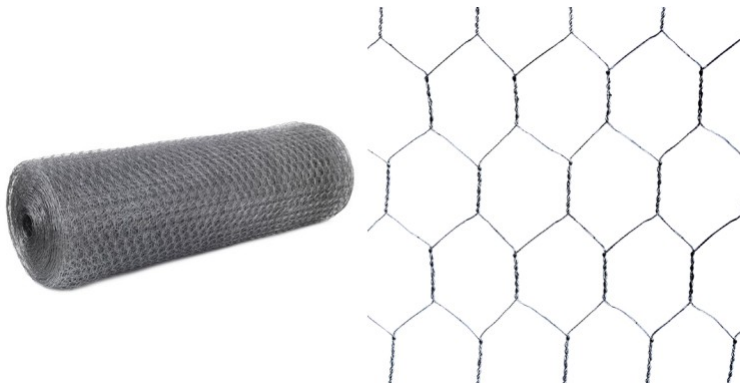
MATERIAL: GALVANIZED STEEL

Name	L ₁	L ₂	ø	Index
Termika wool hooks	115	60	2	T-08-003

ADDITIONAL INFORMATION

Other dimensions and materials are available on request.
100pcs in package.

ISOLA WIRE MESH



Material: galvanized steel

Use: Isola mesh has a versatile application. Among other things, it is used in the construction as reinforcement for lime cement and gypsum renders and insulation. It is also used as a fence for small animals. It works as a protection against pests for gardeners and farmers as well as against predators in bird breeding. It can also be used as a cover for trees and shrubs and as a support for climbers.

Availability: in stock

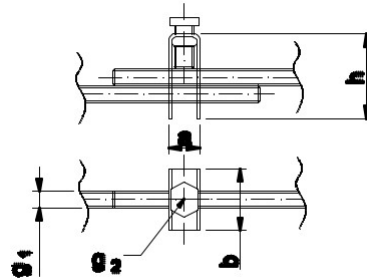
PRODUCT CHARACTERISTICS

Hexagonal mesh	25x25mm
Wire thickness	0,66mm+/-0,01mm
Roll width	1000mm
Roll length	50m
Tensile strength	35-45kg/mm ²
Zinc coating	40-5-g/m ²

ADDITIONAL INFORMATION

Packing: roll - 50 m² / pallet - 1000 m².

THREADED ROD CONNECTOR



Material: galvanized steel

Application: a connector designed to connect two threaded rods of the same diameter.

Characteristics: adjustable connection, detachable connection, quick assembly, high durability

Availability: on request

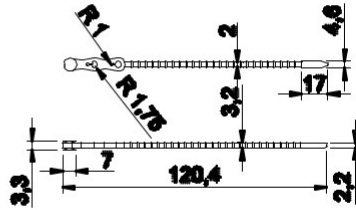
MATERIAL: GALVANIZED STEEL

Name	a	b	g_1	g_2	h	Index
Connector m6	14	17	M6	M6	33	T-08-006
Connector m8	14	17	M8	M6	33	T-08-008
Connector m10	14	17	M10	M6	33	T-08-010
Connector m12	23	23	M12	M10	48	T-08-012

ADDITIONAL INFORMATION

Other dimensions and materials are available on request.

BALL BAND



Material: polyethylene

Use: reusable headband used in places requiring the cable harness to be re-shorted, double harness, label hanging, attachment of nameplates, etc.

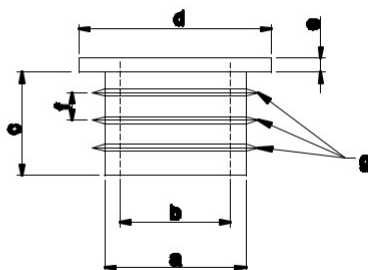
Characteristics: available colors: colorless, blue, red, white; disconnected connection

Availability: on request

MATERIAL: POLYETHYLENE

Name	Length (mm)	Width (mm)	Index
Ball band	120	3,5	T-09-001

PIPE BLANK COVER



Material: polyethylene

Application: in the furniture industry, machinery and construction industries they are used in steel profile constructions, fence systems, furniture.

Characteristics: available in colours: colourless, blue, red, white

Availability: on request

MATERIAL: POLYETHYLENE

Name	c mm	a mm	b mm	h mm	d mm	e mm	f mm	g pc.	Index
c-8	8	5	-	9,5	13	2	3,5	2	t-09-008
c-10	10	7	5	9,5	15	2	3,5	2	t-09-010
c-13	13	10	8	12	18	2	3,5	2	t-09-013
c-15	15	12	10	13	20	2	3,3	3	t-09-015
c-17	17	14	12	13	22	2	3,8	3	t-09-017
c-18	18	15	12,8	13	23	2	3,8	3	t-09-018
c-20	20	17	15	12,5	22,5	4,6	3,8	3	t-09-020
c-22	22	19	16	15	28	2	4	3	t-09-022
c-24	24	21	17,5	15	30	2	4,2	3	t-09-024
c-25	25	22	18,5	15	31	2	4,2	3	t-09-025
c-26	26	23,5	19,5	15	32	2	4,2	3	t-09-026
c-28	28	25	21,5	15	34	2	4,5	3	t-09-028
c-30	30	27	24	15	36	2	4,5	3	t-09-030
c-32	32	28,5	24,5	15	38	2	4,5	3	t-09-032
c-34	34	30,5	27,5	18,5	40	2	4,5	4	t-09-034
c-36	36	33	29,5	19	42	2	4,5	4	t-09-036
c-45	45	37,5	30,5	17	48,5	2	4,7	3	t-09-045
c-50	50	45,5	42	18	54,5	3	4	4	t-09-050
c-80	80	72,5	68	16,5	85,5	3	5,5	3	t-09-080

SERVICES

The scope of our company's activity includes sales of materials for the marine industry, land industry, offshore, construction as well as services in the field of:

projects	supervision
technical documentation	quality control
overseeing the built	warranty and post-warranty services
workmanship and delivery of materials	

We conduct retail and wholesale trade of thermal insulation materials and specialized construction chemicals. We are one of the most important trade partners in this area in northern Poland.

RANGE OF DISTRIBUTION OF GOODS

Our customers:



Polish, European
and world shipyards



Insulation companies
in Poland and Europe



The largest construction
companies in Poland



Manufacturers of air conditioning
and ventilation



Stores and construction
wholesale



Companies from road and
bridge construction industry



Companies from
automotive industry



Companies from
defense industry



Companies from
the railway industry



Companies from
the food industry





